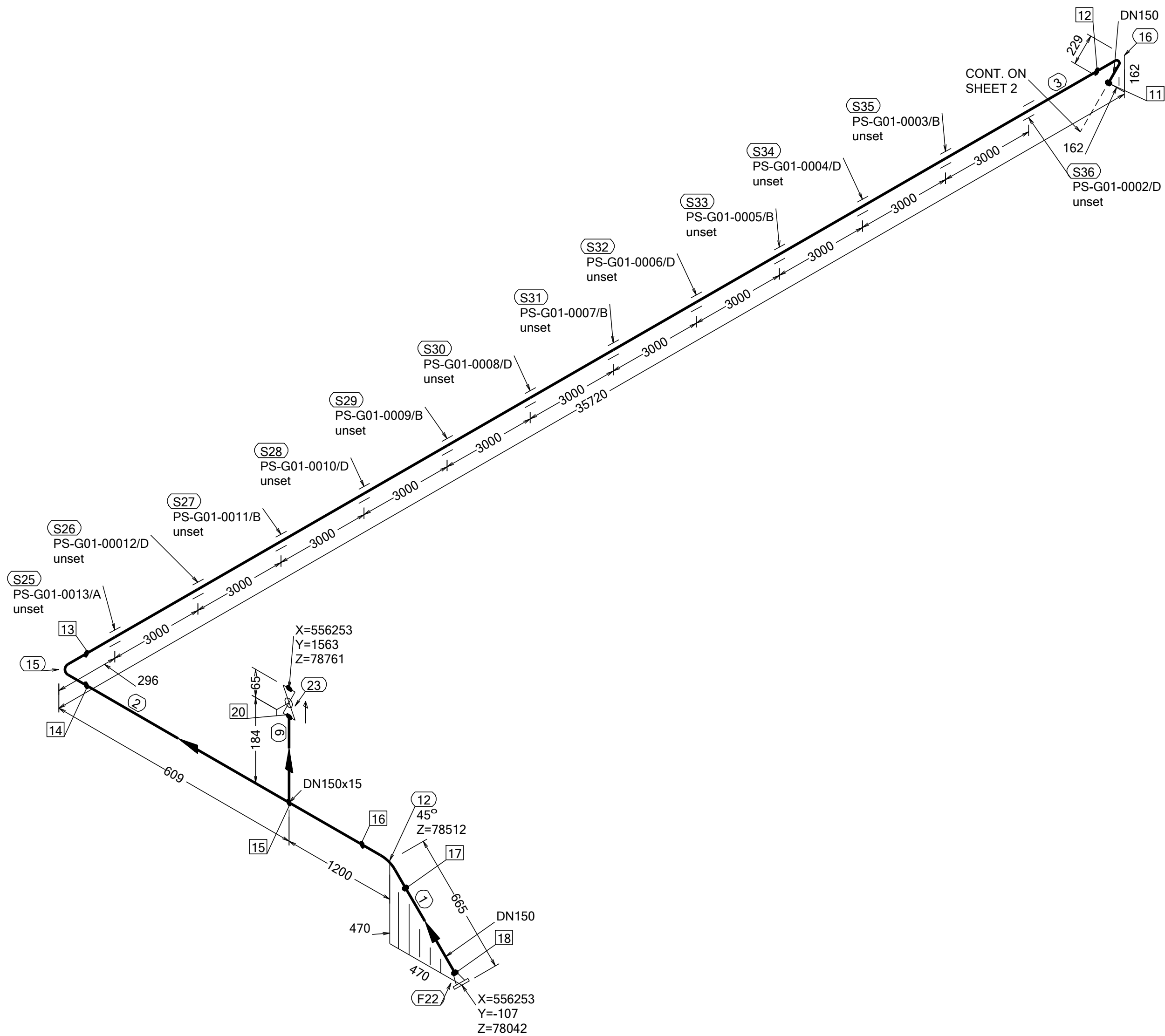


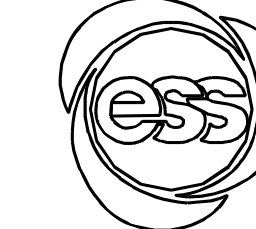
N (Y)



WELD	WPS
11	
12	
13	
14	
15	
16	
17	
18	
19	
20	

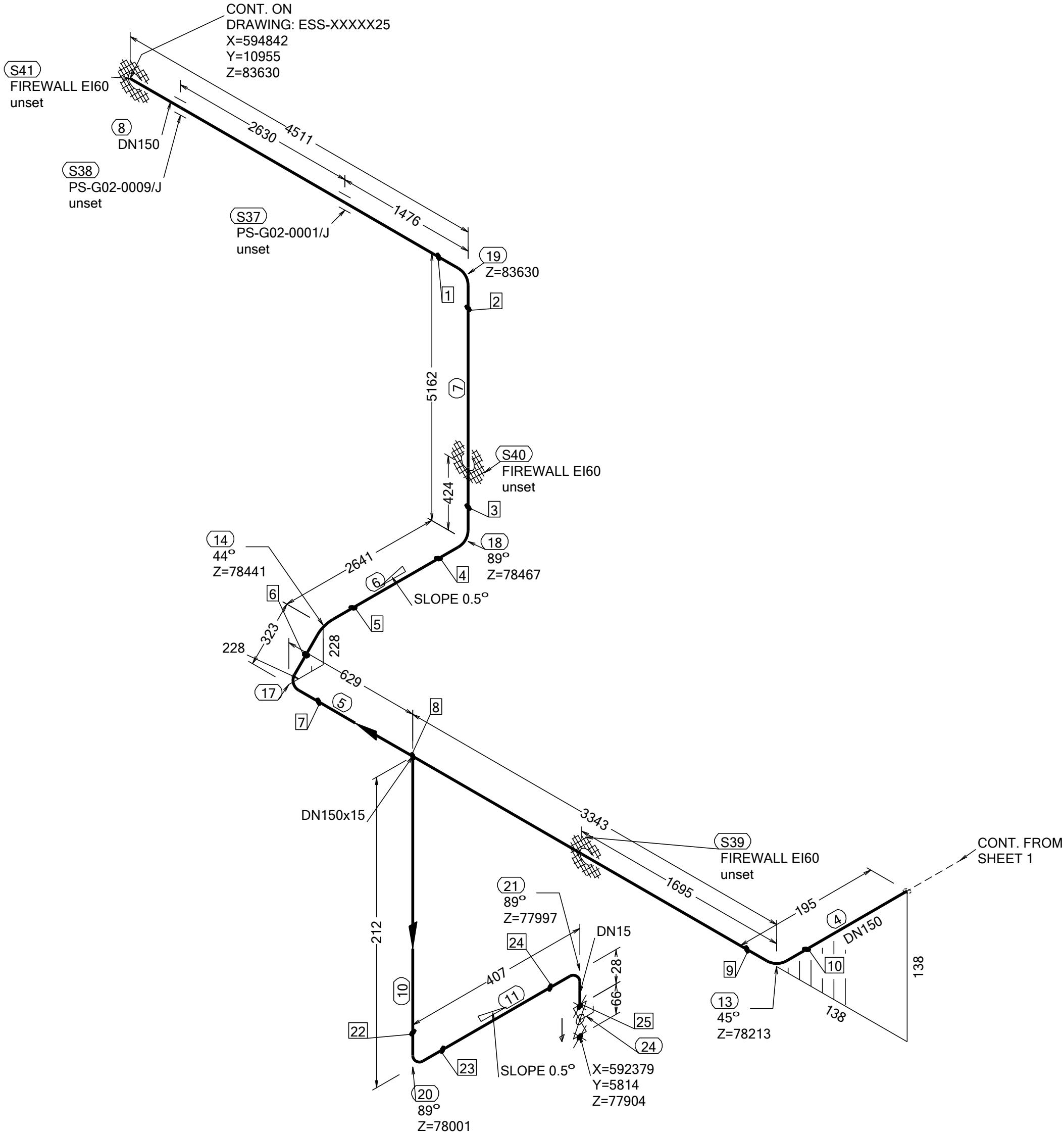
FABRICATION MATERIALS					
PT NO	COMPONENT DESCRIPTION	DN	MATERIAL	QTY (mm)	REMARKS
	PIPE				
1	PIPE, SS-EN 10217-7, TC1, 168.3x2.0	150	EN 1.4404	515	SETON TEE
2	PIPE, SS-EN 10217-7, TC1, 168.3x2.0	150	EN 1.4404	1485	
3	PIPE, SS-EN 10217-7, TC1, 168.3x2.0	150	EN 1.4404	35262	
9	PIPE, SS-EN 10217-7, TC1, 21.3x2.0	15	EN 1.4404	100	
	FITTINGS				
12	ELBOW 45, TYPE 3D, SS-EN 10253-4, TYPE A, 168.3x2.0	150	EN 1.4404	1	
15	ELBOW 90, TYPE 3D, SS-EN 10253-4, TYPE A, 168.3x2.0	150	EN 1.4404	1	
16	ELBOW 90, TYPE 3D, SS-EN 10253-4, TYPE A, 168.3x2.0	150	EN 1.4404	1	
	FLANGES				
22	FLANGE WN, SS-EN 1092-1, TYPE 11, PN16	150		1	
	VALVES / IN-LINE ITEMS				
23	BALL VALVE, WORCESTER A44, SHORT, BW	15		1	

ERECTION MATERIALS					
PT NO	COMPONENT DESCRIPTION	DN	MATERIAL	QTY (mm)	REMARKS
SUPPORTS					
25	ESS Atta	150		1	
26	ESS Atta	150		1	
27	ESS Atta	150		1	
28	ESS Atta	150		1	
29	ESS Atta	150		1	
30	ESS Atta	150		1	
31	ESS Atta	150		1	
32	ESS Atta	150		1	
33	ESS Atta	150		1	
34	ESS Atta	150		1	
35	ESS Atta	150		1	
36	ESS Atta	150		1	


WPS See Weldlist TBN	Design Temperature 50degC	Tightening Torque For Flange Joints TBN	P&ID Drawing Number ESS-0060416	General Layout Drawing Number TBN	Calculation Report ESS-0058702	Inspection Plan TBN	Area Code G01-NCL
Quality Level For Weldign Acc To TBN	Design Pressure 10bar (g)	Bend Radius N/A	Bending Procedure N/A	Coupling Installation Procedure TBN	Pressure Test Program TBN	Alternate System Tag	Date (First Issue) 170522
Weld Joint Efficiency Factor (Longitudinal) 1,0	Test Pressure 14.3bar (g)	Insulation Specification N/A			Title/Name EUROPEAN SPALLATION SOURCE ERIC WATER COOLING SYSTEM CWM DIW SUPPLY FOR FEB ESS.ACC.E02.E04.WP0010		Scale -
Elevation (z) Acc To BCS	Quality Class MQC4-C	Insulation Thickness N/A					Format A2
	Media CWM	Allowance For Corrosion 0					Sheet 1 of 2
	Pipe Specification MQC4-W-PN16	Surface Treatment N/A					Revision A1
					Document Number ESS-XXXXX51		

Rev	Description	Date	Drawn	Designed	Reviewed	Verified	Quality	Approved
A1	ISSUED FOR CDR	170522	FRPE	FRPE	AKCO	ANLU		

N (Y)



WELD	WPS	FABRICATION MATERIALS					
1		PT	COMPONENT DESCRIPTION	DN	MATERIAL	QTY	REMARKS
2		NO				(mm)	
3							
4							
5							
6							
7							
8		4	PIPE				
9			PIPE, SS-EN 10217-7, TC1, 168.3x2.0	150	EN 1.4404	100	SETON TEE
10		5	PIPE, SS-EN 10217-7, TC1, 168.3x2.0	150	EN 1.4404	3648	
11		6	PIPE, SS-EN 10217-7, TC1, 168.3x2.0	150	EN 1.4404	2320	
12		7	PIPE, SS-EN 10217-7, TC1, 168.3x2.0	150	EN 1.4404	4707	
13		8	PIPE, SS-EN 10217-7, TC1, 168.3x2.0	150	EN 1.4404	4282	
14		10	PIPE, SS-EN 10217-7, TC1, 21.3x2.0	15	EN 1.4404	100	
15		11	PIPE, SS-EN 10217-7, TC1, 21.3x2.0	15	EN 1.4404	351	
16							
17			FITTINGS				
18		13	ELBOW 45, TYPE 3D, SS-EN 10253-4, TYPE A, 168.3x2.0	150	EN 1.4404	1	
19		14	ELBOW 45, TYPE 3D, SS-EN 10253-4, TYPE A, 168.3x2.0	150	EN 1.4404	1	
20		17	ELBOW 90, TYPE 3D, SS-EN 10253-4, TYPE A, 168.3x2.0	150	EN 1.4404	1	
21		18	ELBOW 90, TYPE 3D, SS-EN 10253-4, TYPE A, 168.3x2.0	150	EN 1.4404	1	
22		19	ELBOW 90, TYPE 3D, SS-EN 10253-4, TYPE A, 168.3x2.0	150	EN 1.4404	1	
23		20	ELBOW 90, TYPE 3D, SS-EN 10253-4, TYPE A, 21.3x2.0	15	EN 1.4404	1	
24		21	ELBOW 90, TYPE 3D, SS-EN 10253-4, TYPE A, 21.3x2.0	15	EN 1.4404	1	
25							
ERECTOR MATERIALS							
		PT	COMPONENT DESCRIPTION	DN	MATERIAL	QTY	REMARKS
		NO				(mm)	
			VALVES / IN-LINE ITEMS				
		24	BALL VALVE, WORCESTER A44, SHORT, BW	15		1	
			SUPPORTS				
		37	ESS Atta	150		1	
		38	ESS Atta	150		1	
		39	PENETRATION ATTA	150		1	
		40	PENETRATION ATTA	150		1	
		41	PENETRATION ATTA	150		1	

WPS See Weldlist TBN	Design Temperature 50degC	Tightening Torque For Flange Joints TBN	P&ID Drawing Number ESS-0060416	General Layout Drawing Number TBN	Calculation Report ESS-0058702	Inspection Plan TBN	Area Code G01-NC
Quality Level For Weldign Acc To TBN	Design Pressure 10bar (g)	Bend Radius N/A	Bending Procedure N/A	Coupling Installation Procedure TBN	Pressure Test Program TBN	Alternate System Tag	Date (First Issue) 170522
Weld Joint Efficiency Factor (Longitudinal) 1,0	Test Pressure 14.3bar (g)	Insulation Specification N/A			Title/Name EUROPEAN SPALLATION SOURCE ERIC WATER COOLING SYSTEM CWM DIW SUPPLY FOR FEB ESS.ACC.E02.E04.WP0010		Scale -
Elevation (z) Acc To BCS	Quality Class MQC4-C	Insulation Thickness N/A					Format A2
	Media CWM	Allowance For Corrosion 0					Sheet 2 of 2
	Pipe Specification MQC4-W-PN16	Surface Treatment N/A					Revision A1

Rev	Description	Date	Drawn	Designed	Reviewed	Verified	Quality	Approved
A1	ISSUED FOR CDR	170522	FRPE	FRPE	AKCO	ANLU		